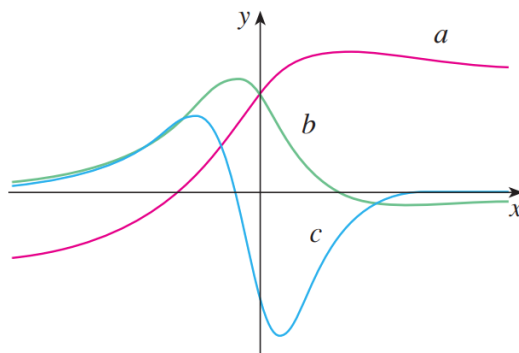


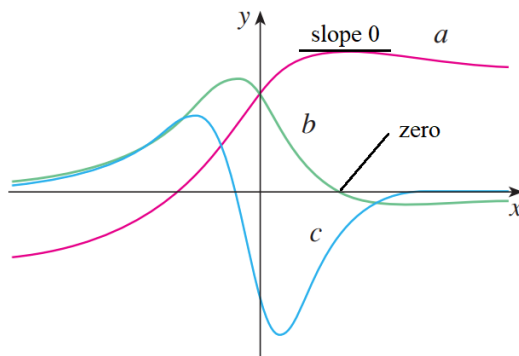
Exercise 49

The figure shows the graphs of f , f' , and f'' . Identify each curve, and explain your choices.

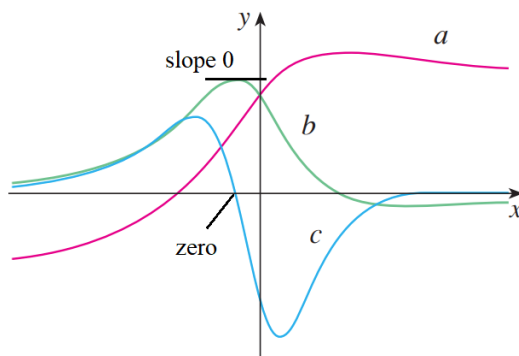


Solution

The b -curve is the derivative of the a -curve because the b -curve is zero where the a -curve has zero slope.



The c -curve is the derivative of the b -curve because the c -curve is zero where the b -curve has zero slope.



Therefore, the a -curve is $f(x)$, the b -curve is $f'(x)$, and the c -curve is $f''(x)$.